

⚠ WARNING No representation or warranty is given that your particular application of these products complies with relevant building codes. Therefore consult with professionals and local building officials before beginning work: (i) to ensure compliance with relevant building codes for your application; (ii) to identify appropriate safety gear that is to be used during installation such as a safety harness when working above ground; (iii) to ensure that the work area is free from utilities, services and hazards; and, (iv) to clarify any instructions or warnings that may not be clear. Work in a safe manner wearing protective gear such as gloves, eyewear, headwear, footwear and clothing. When using tools always comply with operation manuals and instructions. Metal may have sharp edges and could fragment or splinter during or as a result of handling or cutting. Do not use these products in connection with any substance that is or may be harmful or corrosive to the products. Inspect and maintain these products on a regular basis.

No member of The Peak Group of Companies (as defined at www.peakproducts.com) shall be liable for any loss or damage resulting from the improper installation or use of this product. In the unlikely event that any member of The Peak Group of Companies becomes liable for any loss or damage, the aggregate liability shall be limited to the retail purchase price of the product. Peak® products and the materials associated therewith are protected by patents, designs, copyright and/or trademarks. All trademarks are used under license from Peak Innovations Inc. May be subject to patent(s) or patent(s) pending.

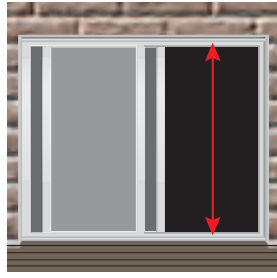
Tools and Materials Needed:

- Mitre saw (recommended) or hacksaw with non-ferrous metal cutting blade
- Measuring tape
- Drill
- 1/8" drill bit
- Phillips #2 screwdriver
- Painter's tape
- Scissors
- Utility knife
- Putty knife

Kit contains:



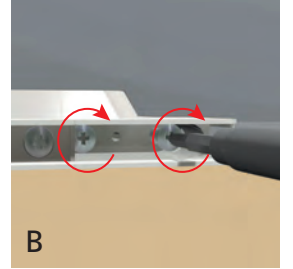
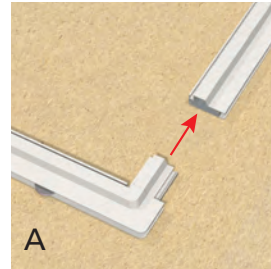
- 1.** Measure height of door screen opening.



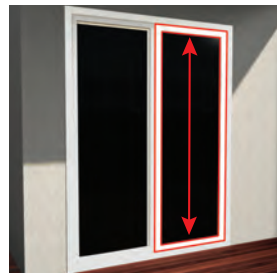
- 2.** Square-cut vertical frames to measured height less 3-1/2".



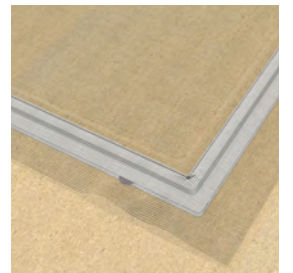
- 3.** Arrange horizontal and vertical frames on a flat surface with the spline groove facing upwards. Insert frame corners into vertical frames (fig. A) and secure using two screws (provided) at each corner (fig. B).



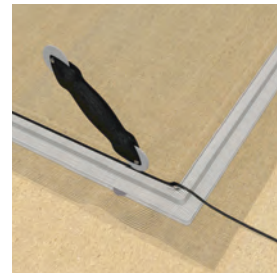
- 4.** Test-fit assembled frame in screen door opening to confirm frame is sized correctly.



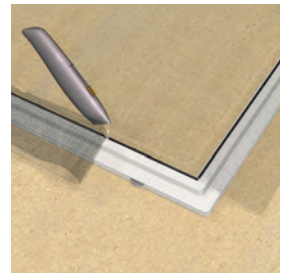
- 5.** Place frame on flat surface. Cut screen to match overall frame dimension, allowing 2" overlap on all sides.



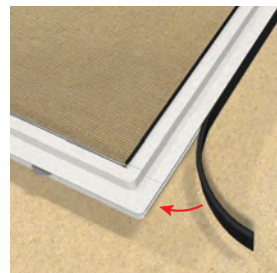
- 6.** Use spline roller to push spline and screen into groove on all sides.



- 7.** Use knife to trim off excess screen.



- 8.** Insert rubber gasket down the side of the vertical frame. Use knife to trim excess length. Optional: If strip is too wide, cut off excess along grooved lines.



- 9.** Install top of door into door frame, then lift bottom into place. Use a putty knife to lift wheels and engage in door frame track.



- 10.** Using a screwdriver, turn the wheel adjustment screw at each corner to extend each wheel.



- 11.** Position plastic handles on vertical frame at desired height. Drill 1/8" pilot holes and attach the handles with four flat head screws (provided).

