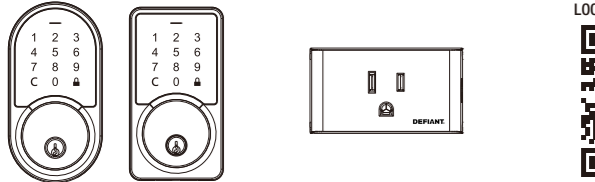




# INSTALLATION AND USER GUIDE



SCAN FOR LOCK INSTALLATION VIDEO  
  
<https://reurl.cc/oeoVkv>

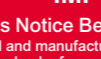
Questions, problems, missing parts?  
Before returning to the store, call Hubspace Customer Service  
**TOLL FREE HELP LINE 1-877-592-5233**  
**HOMEDEPOT.CA/HUBSPACE**  
8 a.m. - 7 p.m., EST, Monday-Friday, 9 a.m. - 6 p.m., EST, Saturday

## WARRANTY

**LIMITED LIFETIME MECHANICAL AND 1 YEAR ELECTRONIC WARRANTY**  
The retailer of this product, hereby warrants, subject to the conditions set forth below, that it will either repair or replace, at its option, this product if it proves to be defective by reason of improper workmanship or materials within the original purchaser's limited time. In order to obtain repairs or replacement under this limited warranty you must bring this product to the retailer's store in which you bought it.  
Original purchaser: This limited warranty is limited to the original purchaser at retail of this product from retailer.  
Except to the extent prohibited by applicable law, no other warranties, whether express or implied, including the warranties of merchantability and fitness for a particular purpose, shall apply to this product. Under no circumstances shall retailer be liable for consequential or incidental damages in connection with this product. To the extent retailer is prohibited by applicable law from excluding implied warranties, the duration of such implied warranties which are not excludable shall be the original purchaser's lifetime. Some states do not allow the limitation on how long an implied warranty lasts, so the above limitation on the duration of implied warranties which are not excludable, if any, may not apply to you. Some states do not allow the exclusion or limitation of incidental or consequential damages, so the above limitation or exclusion of incidental or consequential damages may not apply to you.  
Retailer neither assumes nor authorizes any representative or other person to assume for it any obligation or liability other than such as is expressly set forth herein. This limited warranty gives you specific legal rights, and you may also have other rights which vary from state to state.

## SMART PLUG WARRANTY

**1 YEAR LIMITED WARRANTY**  
This product is guaranteed to be free of defects in materials and workmanship for 1 year from the date of purchase. Guarantee does not include normal wear and tear.



## WIRELESS PROTOCOL

The Wi-Fi CERTIFIED™ Logo is a certification mark of Wi-Fi Alliance®. Apple and the Apple logos are trademarks of Apple, Inc., registered in the U.S., and other countries. App Store is a service mark of Apple Inc. Google, Google Play and the Google Play logo are trademarks of Google LLC.

## BLUETOOTH®

The Bluetooth® word mark and logos are registered trademarks owned by Bluetooth SIG, Inc. and any use of such marks by The Home Depot, Inc., is under license. Other trademarks and trade names are those of their respective owners.  
Smart Plug QDID 153778 and 141499  
Lockset QDID 175971

## FEDERAL COMMUNICATIONS COMMISSION STATEMENT

This device complies with Part 15 of the FCC Rules. Operation is subject to the following two conditions: (1) this device may not cause harmful interference, and (2) this device must accept any interference received, including interference that may cause undesired operation.  
Changes or modifications not expressly approved by the party responsible for compliance could void the user's authority to operate the equipment.  
NOTE: This equipment has been tested and found to comply with the limits for a Class B digital device, pursuant to part 15 of the FCC Rules. These limits are designed to provide reasonable protection against harmful interference in a residential installation. This equipment generates, uses and can radiate radio frequency energy and, if not installed and used in accordance with the instructions, may cause harmful interference to radio communications. However, there is no guarantee that interference will not occur in a particular installation. If this equipment does cause harmful interference to radio or television reception, which can be determined by turning the equipment off and on, the user is encouraged to try to correct the interference by one or more of the following measures:  
- Repoint or relocate the receiving antenna.  
- Increase the separation between the equipment and receiver.  
- Connect the equipment into an outlet on a circuit different from that to which the receiver is connected.  
- Consult the dealer or an experienced radio/TV technician for help.

## IC REGULATIONS

This device complies with Industry Canada licence-exempt RSS standard. Operation is subject to the following two conditions: (1) this device may not cause interference, and (2) this device must accept any interference, including interference that may cause undesired operation of the device.

## ISED Statement

This equipment complies with IC RSS-102 radiation exposure limits set forth for an uncontrolled environment. This equipment should be installed and operated with a minimum distance of 20cm between the radiator and any part of your body.  
CAN ICES-003(B)/NMB-003(B)  
IC ID: 10256A-LA02303B  
HVIN: LA02303B

## Supplier's Declaration of Conformity

47 CFR § 2.1077 Compliance Information  
**Responsible Party**  
Fu Hsing Americas, Inc  
1424 Buford Business Blvd NE Ste 100 Buford, GA 30518 1-770-441-2830

## IMPORTANT NOTICE

Please Read This Notice Before Installing, Using, and Servicing the Product  
The product is designed and manufactured for providing security. Please read carefully and follow the instructions given below. Lack of proper working knowledge or improper use could cause unexpected damage or loss to personal or commercial belongings.

### Installation

- Please contact your local service provider prior to the installation as your door preparation may be different from the standard the product conforms to.
- Any removal or replacement of parts in installation is NOT recommended and may invalidate the warranty of the product.
- Not to be used on an Emergency Exit.

### Product Use

- **ALWAYS use authentic alkaline batteries.** It is the user's responsibility for damage caused by using unauthentic batteries.
- The product is made of mechanical and electronic components, which may be sensitive towards water, physical impact, and electric shock. Using the product with care prevents unexpected malfunction and optimizes the product life span.
- **DO NOT disassemble the product without advice from qualified service provider.** Unauthorized disassembly will void the product warranty.
- Please refer to TROUBLESHOOTING page if any problem occurs, or contact your local service provider for professional instructions.
- Remove all batteries from the lock at the same time and replace them with new batteries of the same size and type.
- Preserve battery and lock life by removing the batteries when the lock is not being used for more than 3 months.

### Service and Maintenance

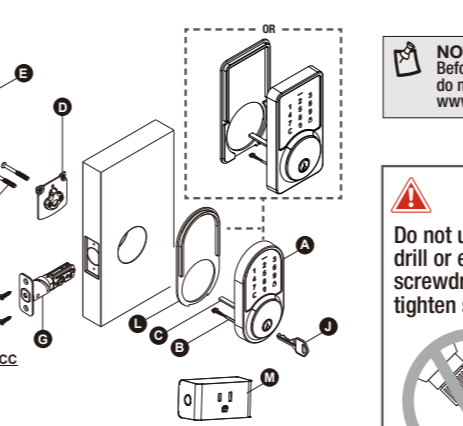
- **ALWAYS seek advice from your local service provider on cleaning, moving, or maintaining the product.** The information in this notice is subject to change without notice.

### Smart Plug

Make sure to use this product together with 10A circuit breaker in the upstream.  
For indoor use only. Do not use in wet locations. The total current limit of the device is 10 Amps. To avoid damage, do not exceed the 10 Amp limit. If a direct short is created on the output, the Smart Plug will be damaged and no longer function. Do not disassemble the product or make repairs yourself. You run the risk of electric shock and voiding the limited warranty. If you need service, please contact Customer Support.

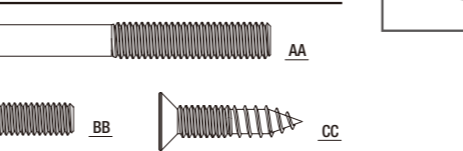
## Package Contents List

Part	Description	Quantity
A	Exterior Assembly	1
B	Power Cable	1
C	Torque Blade	1
D	Mounting Plate	1
E	Interior Assembly	1
F	Battery Cover	1
G	Latch	1
H	Strike Plate	1
I	Dust Box	1
J	Key	2
K	Drive-in Collar (Optional)	1
L	Exterior Gasket	1
M	Smart Plug	1



## Hardware Contents (Actual Size)

Part	Description	Quantity
AA	1-13/16" (46 mm) Mounting Bolt	2
BB	13/16" (20 mm) Screw	2
CC	3/4" (19 mm) Wood Screw	4



## Safety Information

**NOTE:** Before beginning installation of product, make sure all parts are present. If any part is missing or damaged, do not attempt to assemble, install or operate the product. Call the Customer Service Team or visit [www.homedepot.com](http://www.homedepot.com).

**Do not use electric drill or electric screwdriver to tighten screws.**

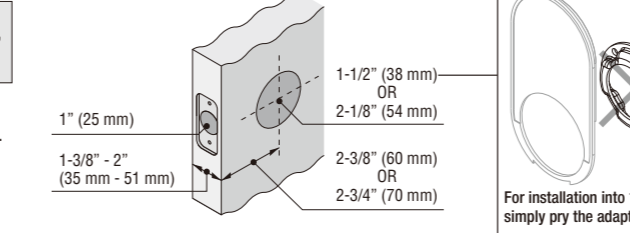
**CARE and MAINTENANCE:** The following instructions should be followed to properly protect and maintain your lockset:

- A. Remove locks, or do not install locks, prior to painting your door.
- B. Periodically clean with mild soap and a soft cloth only.
- C. Do not use any abrasives or chemical products containing alcohol, benzene, acids, and avoid using sharp or abrasive objects to clean this lockset.
- D. Do not allow any water or liquids into the lockset during installation.

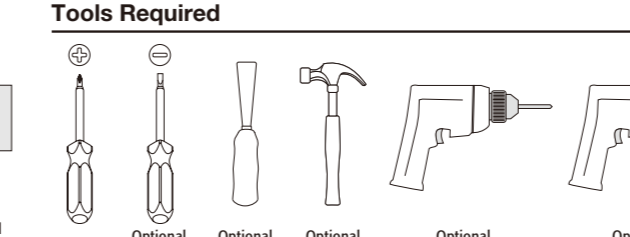
**WARNING:** If the door needs to be drilled, please be familiar with how to use a drill safely and understand all of the door preparation steps before proceeding.

## Before Proceeding

### Check Dimensions



### Tools Required



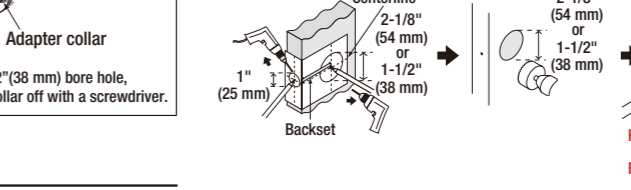
**WARNING:** If the door needs to be drilled, please be familiar with how to use a drill safely and understand all of the door preparation steps before proceeding.

## Step 1: Drill Door For New Installation

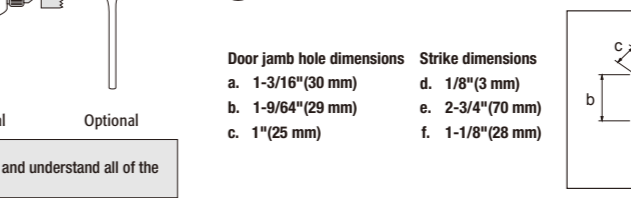
**1** Cut out TEMPLATE and use to mark the door, drill holes, and chisel out the mortise.

**NOTE:** If your door already has holes, skip to **Step 2**

**Warning:** Drill from both sides of the door to prevent wood splitting.

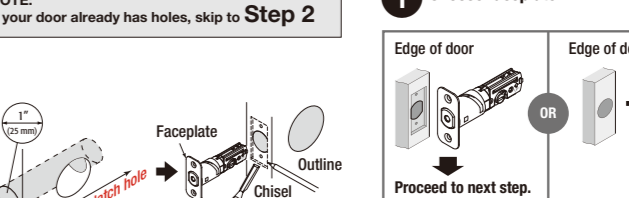


**2** Prepare the door jamb – use the strike plate as a template to drill the latch and screw holes and chisel out the mortise. The strike plate must fit flush with the surface of the door jamb.



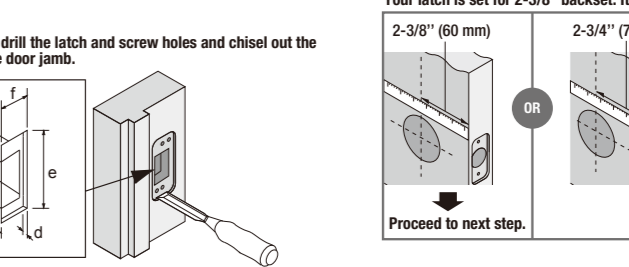
## Step 2: Install the latch and strike

**1** Choose faceplate



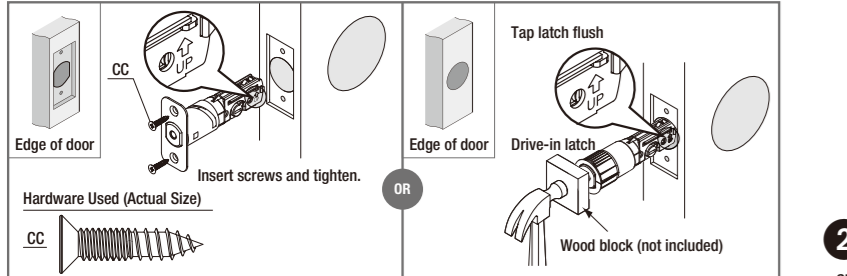
**2** Set the latch backset

Your latch is set for 2-3/8" backset. It can be adjusted if needed to 2-3/4" (skip this if your door has a 2-3/8" backset).



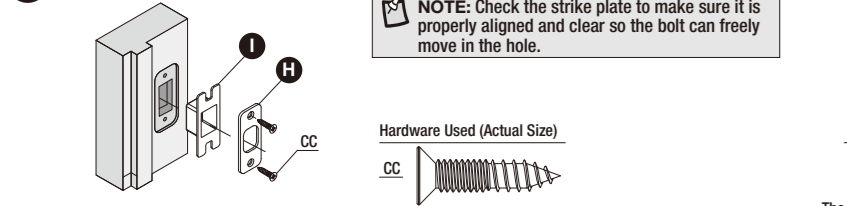
### 3 Install the latch

**⚠** You must use the latch that was provided in the packaging.



### 4 Install strike plate in door jamb

**NOTE:** Check the strike plate to make sure it is properly aligned and clear so the bolt can freely move in the hole.



### Step 3: Install Electronic Deadbolt

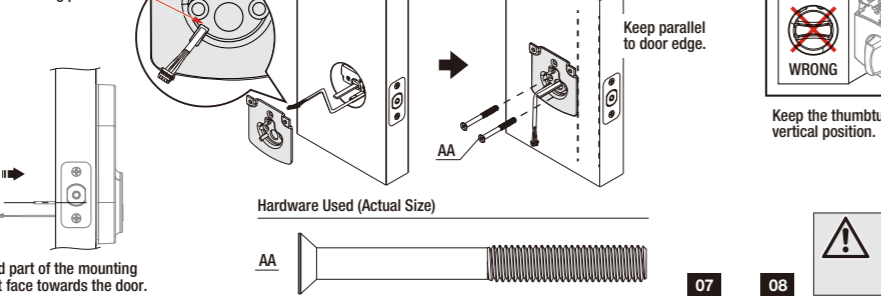
#### 1 Installing the lock assemblies

Rotate torque blade to fit in latch. Cable goes underneath latch.

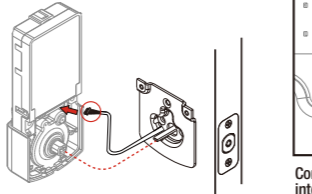


#### 2 Fasten the mounting plate to door

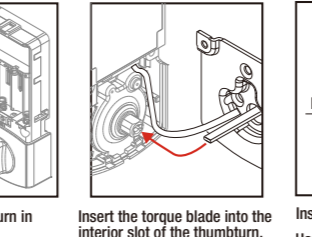
Slide the cable through the notch in mounting plate.



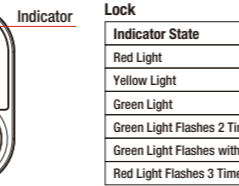
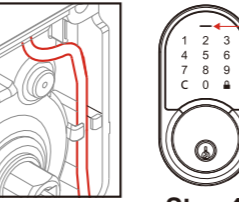
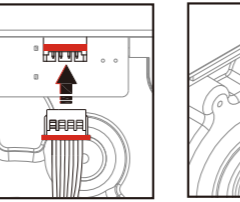
### 3 Connect the cable firmly into connector port



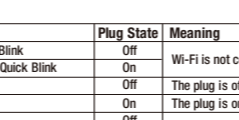
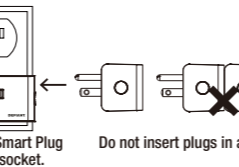
#### 4 Install interior assembly



**CAUTION :** Please use four alkaline batteries for better performance. Be sure to insert them correctly by matching the + and - polarity markings. Do not mix old batteries and new batteries or standard (carbon-zinc) with alkaline batteries.

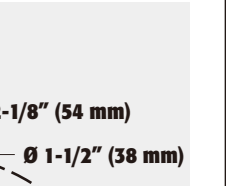
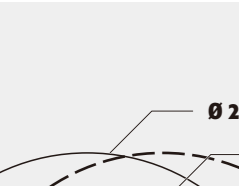
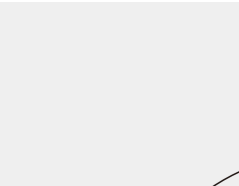
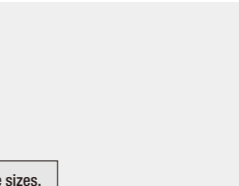
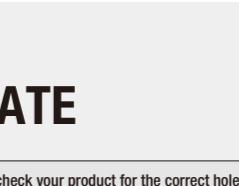
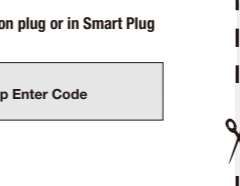
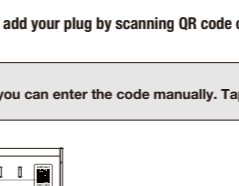
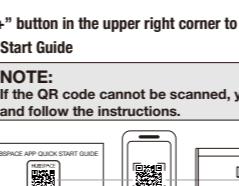
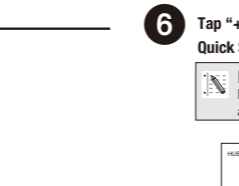
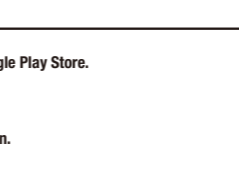
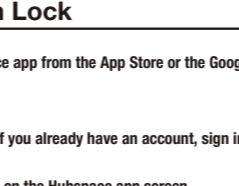
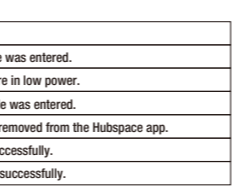


### Step 4: Smart Plug



LED State	Plug State	Meaning	Action To Take
Orange Quick Blink	Off	Wi-Fi is not connected.	Set up Wi-Fi for the product. If you have already set up Wi-Fi for this product, wait for it to connect. Check the Hubspace app for connectivity status.
Orange/Green Quick Blink	On		
Off	Off	The plug is off.	No action required.
Green	On	The plug is on.	
Red	Off	There is a Wi-Fi error.	Go to the device settings in the app and set up Wi-Fi again. Check that your WiFi Access Point is allowing the device to join the network.
Orange	On		

Indicator	Lock	Meaning
1	Red Light	Wrong PIN code was entered.
2	Yellow Light	The batteries are in low power.
3	Green Light	Correct PIN code was entered.
4	Green Light Flashes 2 Times with 2 Beeps	Lock has been removed from the Hubspace app.
5	Green Light Flashes with 1 Beep	Lock/Unlock successfully.
6	Red Light Flashes 3 Times with 3 Beeps	Lock/Unlock unsuccessfully.



### Step 5: Program Lock

#### 1 Download the Hubspace app from the App Store or the Google Play Store.

**NOTE:** If the QR code cannot be scanned, you can enter the code manually. Tap Enter Code and follow the instructions.

#### 2 Create an account, or if you already have an account, sign in.

#### 3 Follow the instructions on the Hubspace app screen.

#### 4 Tap "+" button in the upper right corner to add your lock by scanning QR code on the lockset or in Lock Quick Start Guide, and it will perform lock direction check automatically

#### 5 Connect your plug to power and follow the instructions on the Hubspace app screen.

#### 6 Tap "+" button in the upper right corner to add your plug by scanning QR code on plug or in Smart Plug Quick Start Guide

#### 7 Set up Smart Plug as Wi-Fi Gateway for remote control.

#### 8 Set up your Voice Assistant

You can connect your smart plug to Google Home and Alexa from the Hubspace app. Or, you can sign in to Alexa app or Google Home and connect to your Hubspace devices from there.

Tap Smart Plug from the homepage in Hubspace app, and find "Wi-Fi gateway support to another device" to set your Smart Plug as a Wi-Fi Gateway. This allows you to connect your lock remotely with internet access from your phone.

Tap "SET" button in the upper right corner to add your plug by scanning QR code on the lockset or in Lock Quick Start Guide, and it will perform lock direction check automatically

**NOTE:** If the QR code is missing or unable to scan, follow the app instructions. Press and hold the SET button for 5 seconds to discover your lock.

**NOTE:** Double check your product for the correct hole sizes.

Drill a 1" (25 mm) diameter hole at the center of the door edge.

2-3/8" (60 mm)

2-3/4" (70 mm)

Backset

Backset

Ø 2-1/8" (54 mm)

Ø 1-1/2" (38 mm)

## TEMPLATE

**NOTE:** Double check your product for the correct hole sizes.

